



<b>Document Title</b>				<b>Document #</b>	<b>Revision</b>
<b>Fender Bracket Installation Instructions For Kit 105615</b>				<b>105616</b>	<b>A</b>
<b>Author</b>	<b>Checked By</b>		<b>Effective Date</b>	<b>DCN #</b>	<b>Page 1</b>
BAG	MJL		9/11/2020	281	

## Fender Bracket Installation Instructions for Kit 105615

This bracket kit is designed to be used with Minimizer Fender Models MIN 161200, MIN221800, and MIN2220.

### STEP 1

- A. Open box and lay out parts
- B. Compare the parts with hardware kit 105615 shown below in Figure 1.

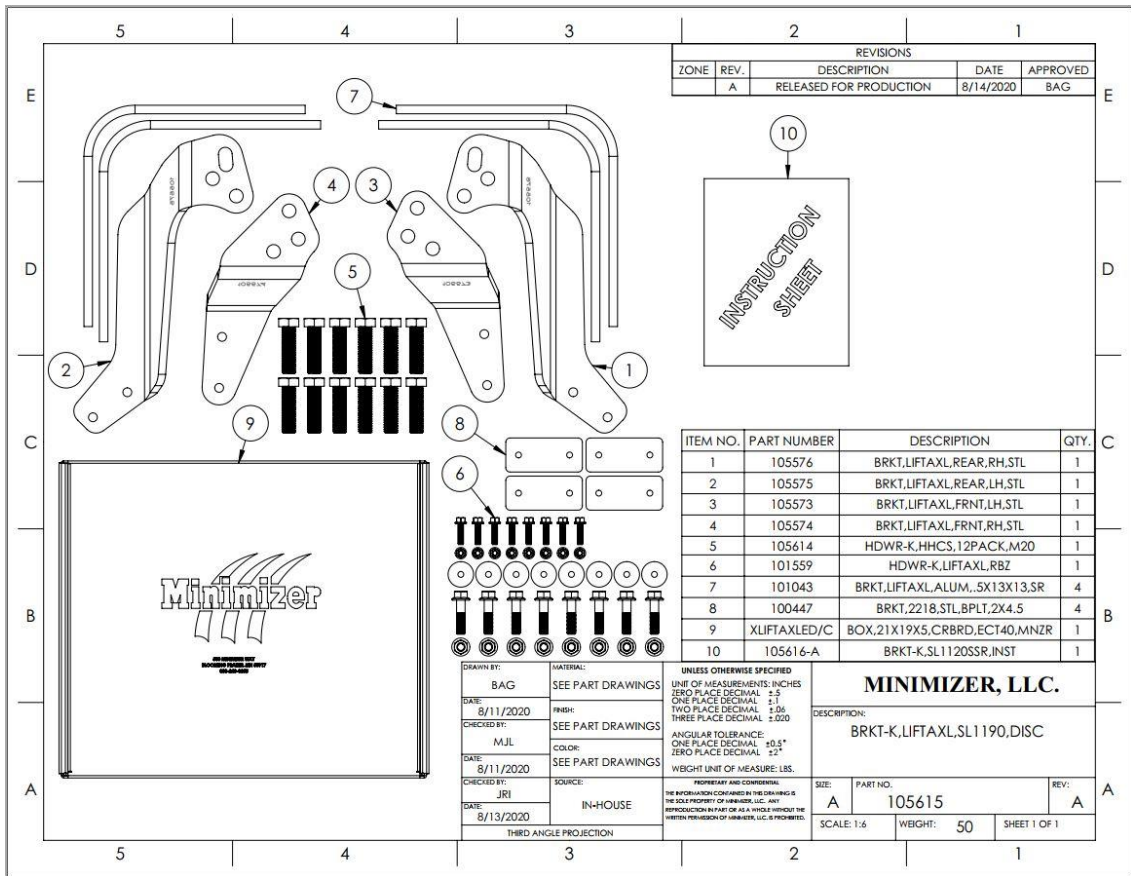



Figure 1

	Document Title				Document #	Revision
	Fender Bracket Installation Instructions for Kit 105615				105616	A
	Author	Checked By		Effective Date	DCN #	Page 2
	BAG	MJL		9/11/2020	281	

## STEP 2

- A. Pair parts #105576 & #105574 for RH Side
- B. Pair parts # 105573 & #105575 for LH Side
- C. See figure 2 for Front and Rear Locations

USE PREDRILLED HOLES IN BRACKETS  
TO MARK LOCATION FOR DRILLING  
HOLES IN ALUMINUM BRACKETS

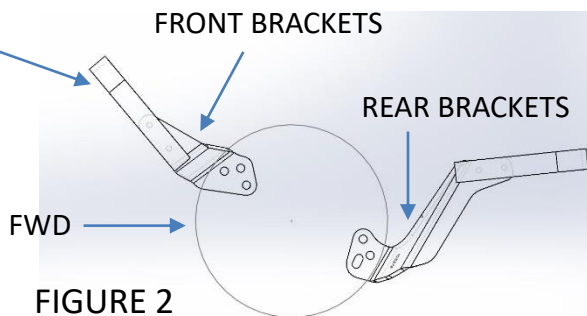


FIGURE 2  
RH SIDE FRAME LOOKING OUT

## STEP 3

- A. On the right side of the truck remove the M20 bolts and Flat Washers from the brake caliper assembly and discard bolts
- B. Use the M20 bolts provided in the kit and the flat washers previously removed to install bracket 105574 to front side of axle as shown in Figure 2.
- C. Repeat the procedure and install bracket105576 on the rear side of axle.
- D. Torque all M20 bolts to 375 ft lb.
- E. Repeat procedure for LH side of vehicle using brackets 105573 & #105575.