



<b>Document Title</b>				<b>Document #</b>	<b>Revision</b>
<b>Fender Bracket Installation Instructions For Kit 105714</b>				<b>105720</b>	<b>A</b>
<b>Author</b>	<b>Checked By</b>		<b>Effective Date</b>	<b>DCN #</b>	<b>Page 1</b>
MJL	BAG	MJL	12/15/20	287	

## Fender Bracket Installation Instructions for Kit 105714

### Compatibility Notes

- This bracket kit is compatible with Hendrickson Composolite EXS13, EXS10 and EXS08 steerable lift axles with drum style brakes.
- This bracket kit is designed to be used only with Minimizer fender models MIN161200 and MIN221800.

### Installation Steps

#### Step 1

- Open the package and lay out parts
- Compare the parts with the drawing shown below in Figure 1.

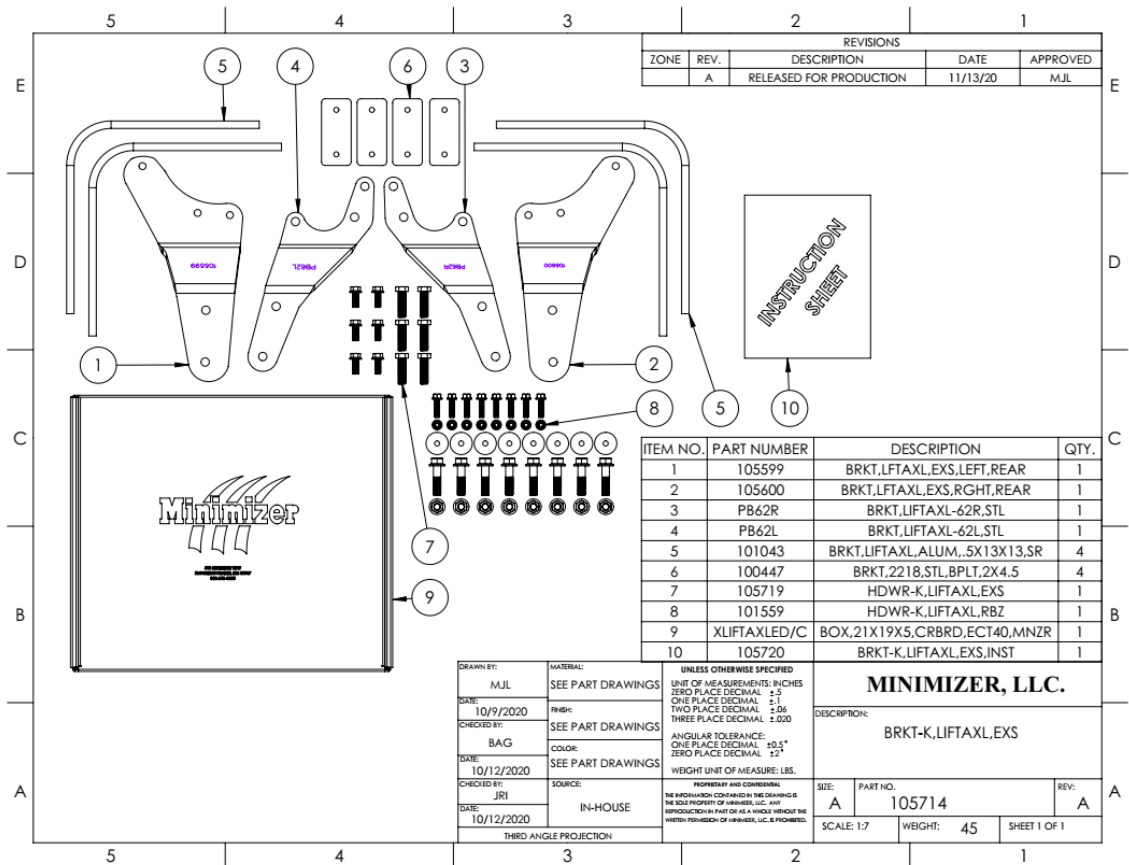



Figure 1 – Kit of Parts Drawing 105714

#### Step 2

- Locate parts 105600 and PB62R to be installed on the right side of the truck.

	Document Title				Document #	Revision
	Fender Bracket Installation Instructions for Kit 105714				105720	A
	Author	Checked By		Effective Date	DCN #	Page 2
	MJL	BAG	MJL	12/15/20	287	

### Step 3

- A. Remove the sheet metal dust shield from the right side of the axle (if equipped). Dust shields are an optional item and not included on all axles.
- B. Dust shield mounting holes will be utilized as an attachment point for the rear fender brackets. See Figure 2 below to locate the dust shield mounting holes on the cast steering knuckle assembly.

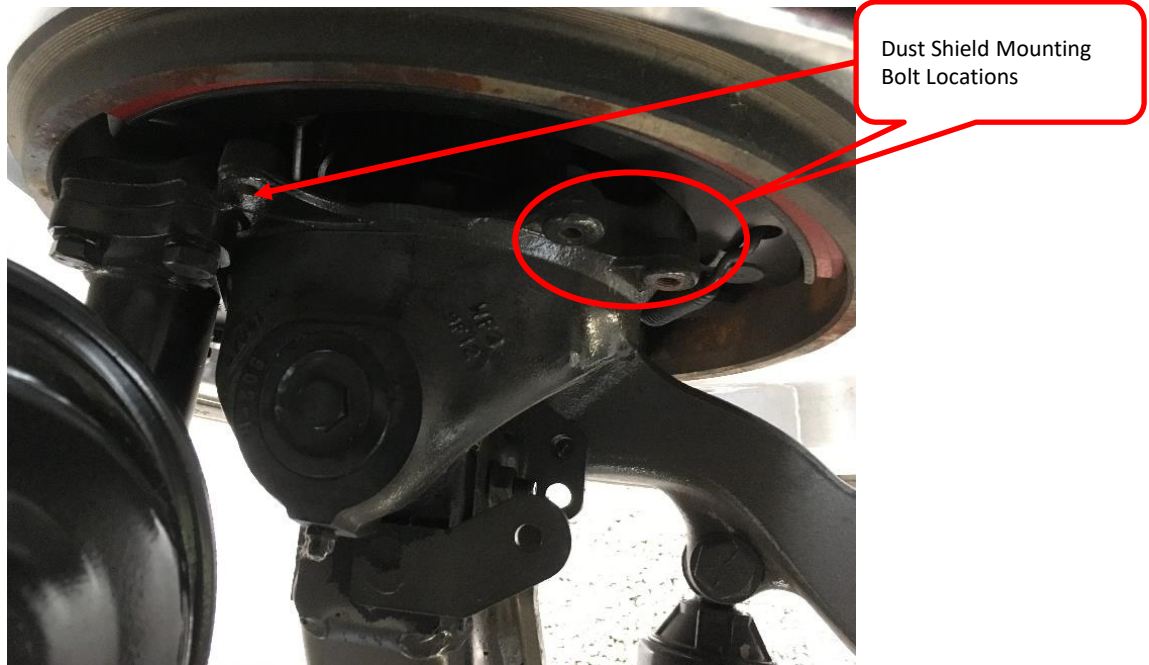


Figure 2 – Dust Shield Mounting Holes

### Step 4

- A. Use the 3/8-24 x 1 flange head bolts to attach the right rear fender bracket 105600 to the dust shield mounting holes on the axle as shown in Figure 3.
- B. Tighten the 3/8 flange bolts to 49 - 54 ft-lbs

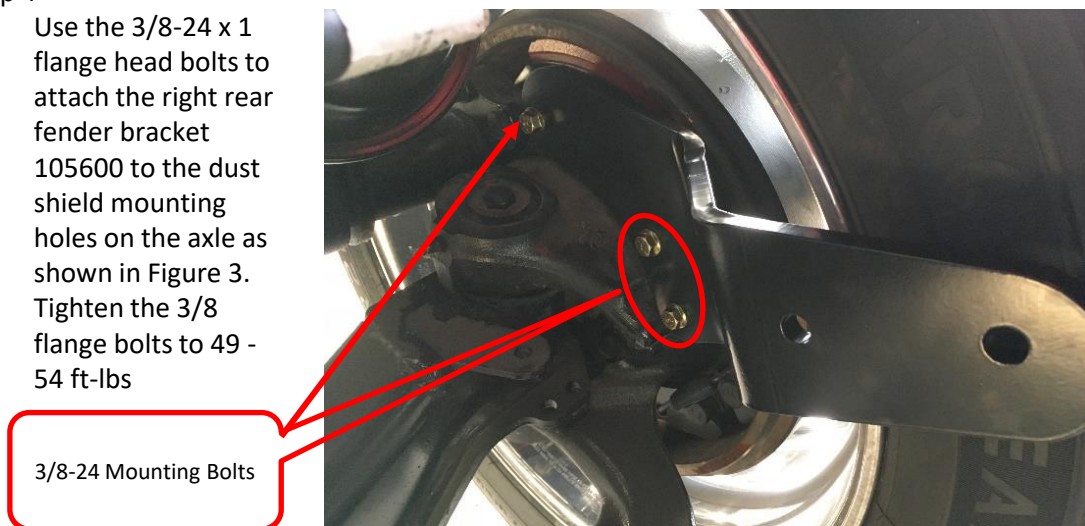


Figure 3 – Right Rear Bracket Installed (105600)



Document Title				Document #	Revision
Fender Bracket Installation Instructions for Kit 105714				105720	A
Author	Checked By		Effective Date	DCN #	Page 3
MJL	BAG	MJL	12/15/20	287	

Step 5

- A. Remove three of the four existing  $\frac{1}{2}$ " bolts from the brake cam tube shown in Figure 4.

Step 5  
Remove (3) Bolts




Figure 4 - Brake Cam Tube Mounting Bolts

Step 6

- A. Attach the right front fender bracket (PB62R) to the brake cam tube. Use the longer  $\frac{1}{2}$ "-13 bolts provided in the kit along with the existing split lock washers.
- B. Tighten the  $\frac{1}{2}$ "-13 bolts to 75-83 ft-lbs.



Figure 5 – View of Right Front Fender Bracket PB62R Installed

	<b>Document Title</b>				<b>Document #</b>	<b>Revision</b>
	<b>Fender Bracket Installation Instructions for Kit 105714</b>				<b>105720</b>	<b>A</b>
	<b>Author</b>	<b>Checked By</b>		<b>Effective Date</b>	<b>DCN #</b>	
	MJL	BAG	MJL	12/15/20	287	
<b>Page 4</b>						

**Step 7**

- A. Place the Minimizer fender over the tire and use wood shims to space the tire away from the fender.
- B. The minimum clearance between the tire and fender is 3/4".

**Step 8**

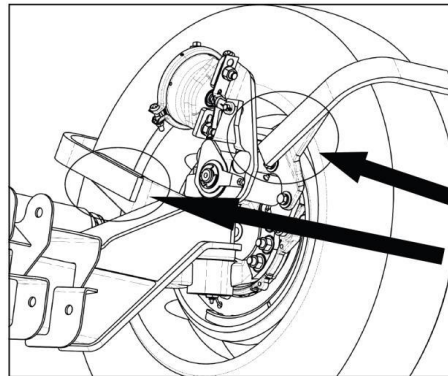
- A. Align the 101043 aluminum arms to the outside of the MIN161200 fender and to the inside face of the steel bracket.
  - 1. If installing the Minimizer 221800 fender, place the arms on the inside face of the fender and on the outside face of the brackets.
- B. Clamp the aluminum arms to the steel brackets as shown in Figure 6.
- C. Adjust the arms to align with the fender. For the 161200 fender the rear arm should land on the ribs as shown in Figure 8 on page 5.



Figure 6 – Aluminum Arm with 1612 Fender

**Step 9**

- A. Depending on the fender model used and tire clearance desired, the aluminum arms may be longer than necessary as shown in Figure 7
- B. Mark and trim any excess material from the aluminum arms that extend past the bend in the mounting bracket as shown in Figure 7.



Mark and trim any excess material from the aluminum arms that extend past the bend in the mounting plate.


Figure 7 – Trim Arms If Necessary

**Step 10**

- A. Use the steel brackets attached to the axle as a template to mark the mounting hole locations in the aluminum arms see Figure 14.

**Step 11**

- A. Remove the aluminum arms and trim them at the marked line.
- B. Drill two 9/16" diameter thru holes for the 1/2" mounting bolts.

	Document Title				Document #	Revision
	Fender Bracket Installation Instructions for Kit 105714				105720	A
	Author	Checked By		Effective Date	DCN #	Page 5
	MJL	BAG	MJL	12/15/20	287	

#### Step 12

- A. Fasten the aluminum arms to the fender brackets using the 1/2" x 2" flange head bolts and the 1/2" locknuts provided.
- B. Recommended torque is 75-83 ft-lbs.

#### Step 13 (MIN161200 Fender)

- A. Place the fender below the aluminum arms.
- B. Make sure the fender is aligned to the tire
- C. Drill and fasten the fender
  - Option 1 ) Drill two 11/32" diameter clearance holes thru the fender and the arm.
  - Option 2) Drill and tap 5/16"-18 threads into the aluminum arm to secure the fender. This option provides more tire clearance.
- D. Use 5/16" bolts w/self-locking nuts (provided in kit) recommended torque is 5-7ft-lbs.
  - Shorter 5/16"-18 bolts (not included) will be required for option 2.



Figure 8 – 1612 Fender In Position

#### Step 14 (MIN221800 Fender)

- A. If installing the Minimizer model 221800 the fender is designed to rest on top of the aluminum arms as shown in Figure 9.
- B. Drill 11/32 clearance holes to attach the fender to the aluminum arms and backing plates as shown in Figure 9.
  - To be eligible for Minimizer warranty, the steel backing plates 100447 must be installed on the exterior surface of the fender.
  - Align the backing plate 100447 so it is even (top to bottom) with the aluminum arm.
- C. Use 5/16" bolts w/self-locking nuts (provided in kit) recommended torque is 5-7ft-lbs. . Do not exceed the recommended torque.

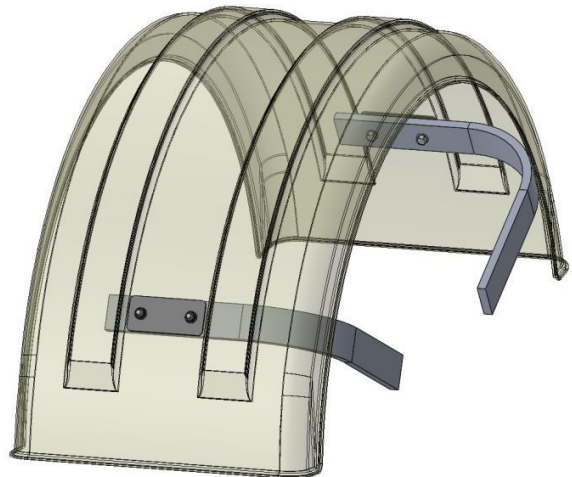


Figure 9 – 2218 Fender Attachment with Backing Plates

#### Step 15

- A. Locate parts 105599 and PB62L for use on the left side of the truck
- B. Repeat step 3 through 14 to install the brackets and fenders on the left side of the truck